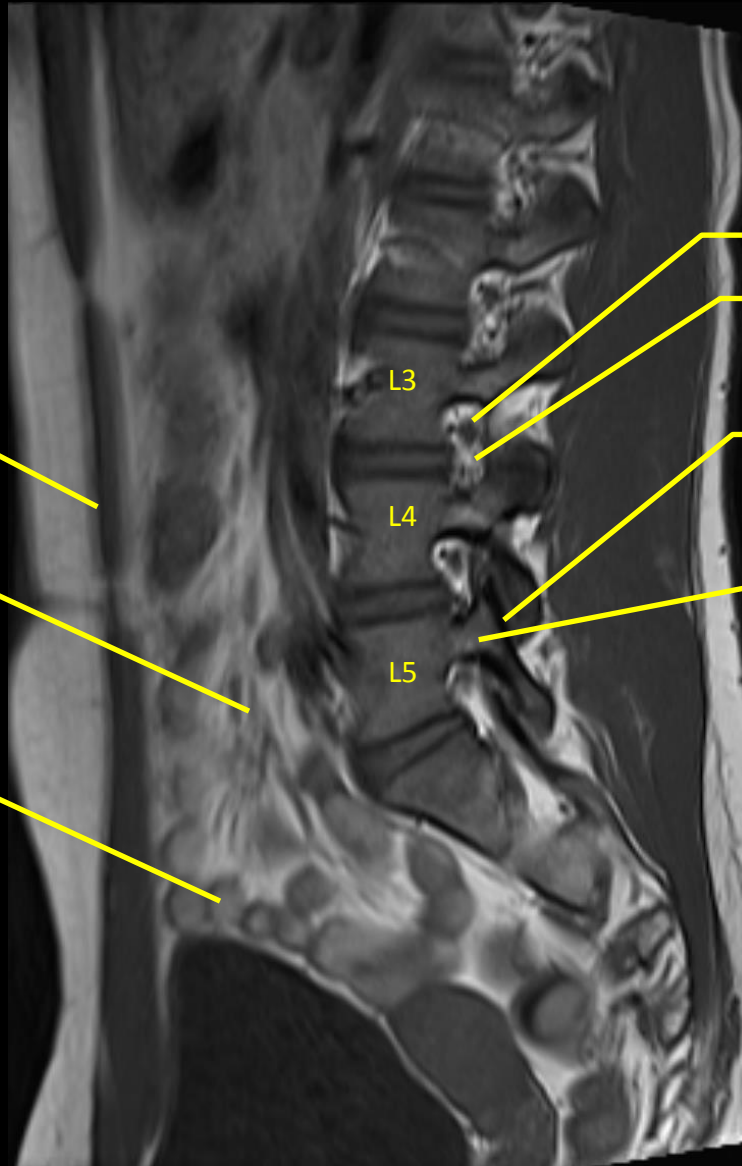


T2 - Sagittal

Cave T1W



M. Rectus abdominis

Mesenterium

Dünndarm

Nervenwurzel L3

Fett

Facettengelenk L4/5

Bogenwurzel L5

L3

L4

L5

T1 - Sagittal

Cave T1W

Spinalkanal

Linke Niere

ZF: 4,2

M. Psoas

Bogenwurzel L3

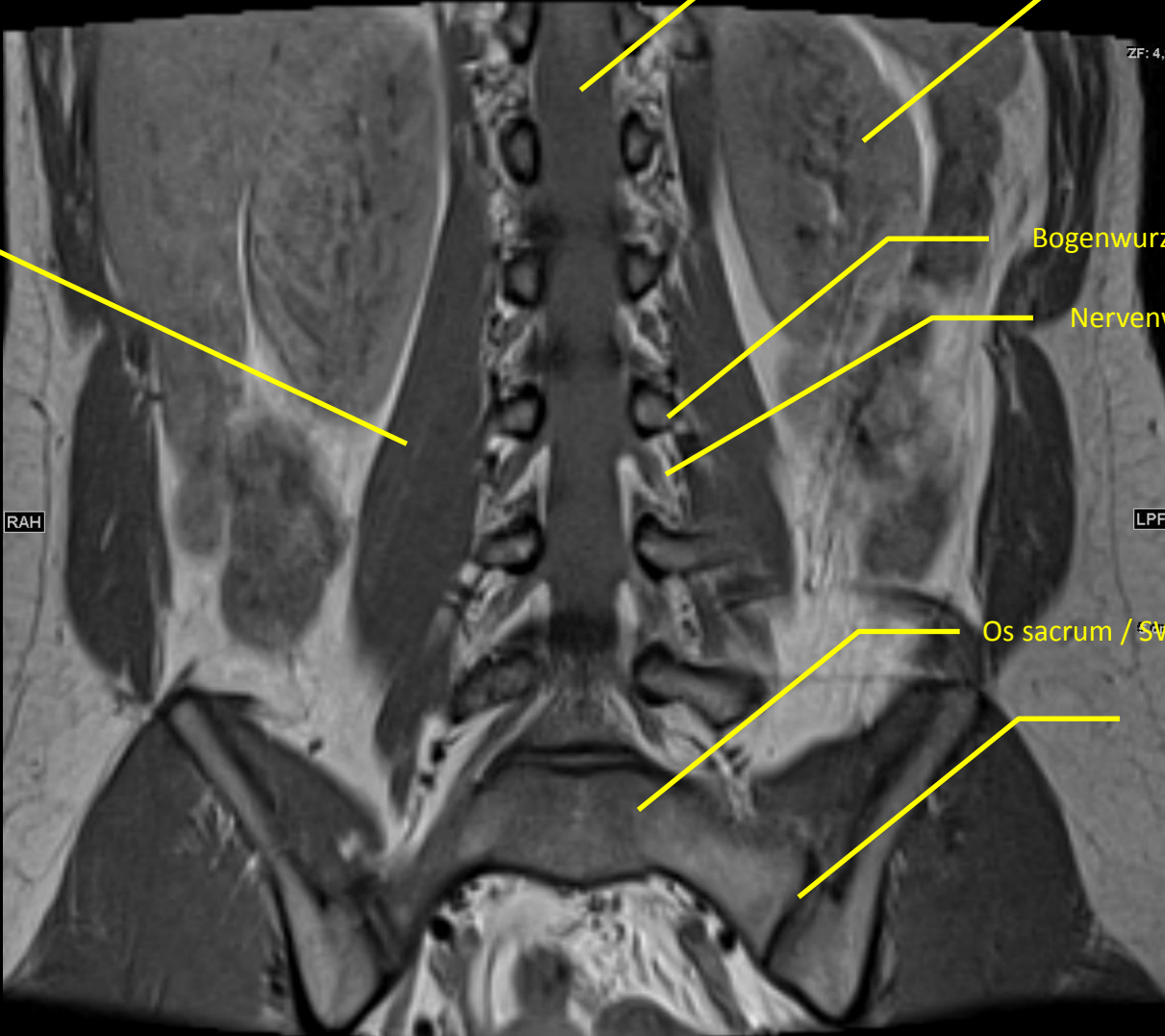
Nervenwurzel L3

RAH

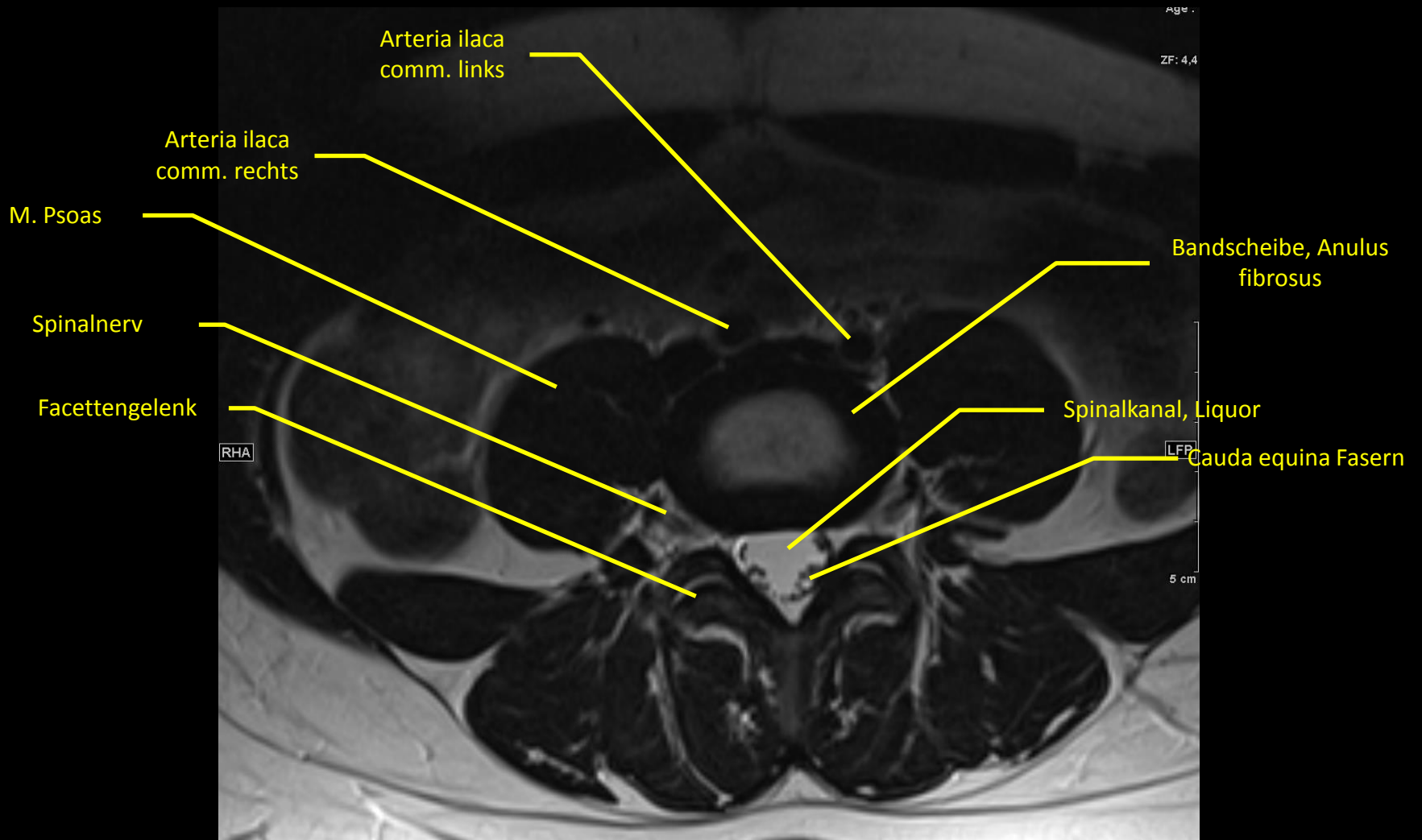
LPH

Os sacrum / SWK 1

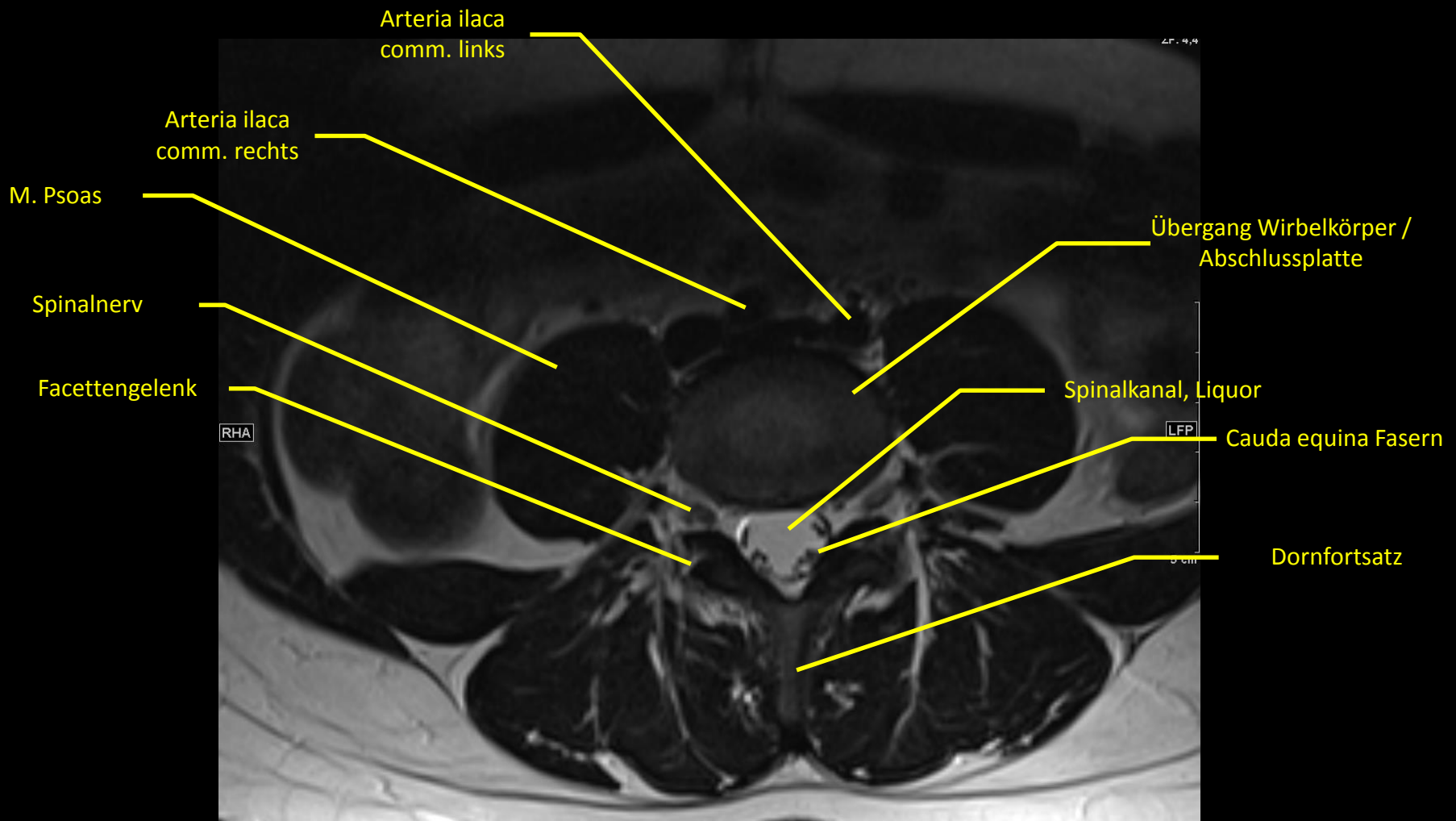
ISG



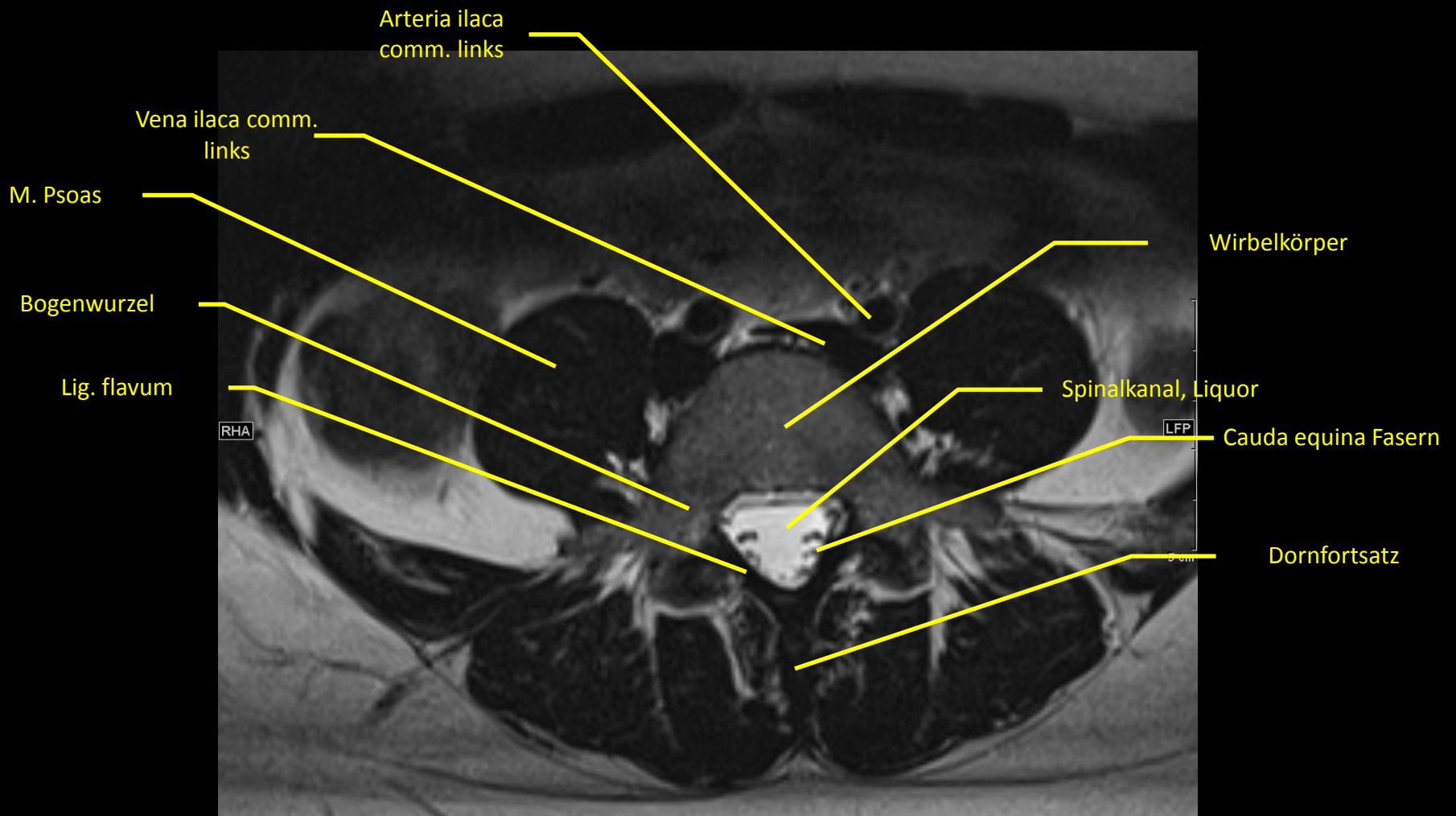
T1 - Coronal



T2 - Transversal



T2 - Transversal



T2 - Transversal