

T2 - Coronal

Leber

Herz (linker
Ventrikel)

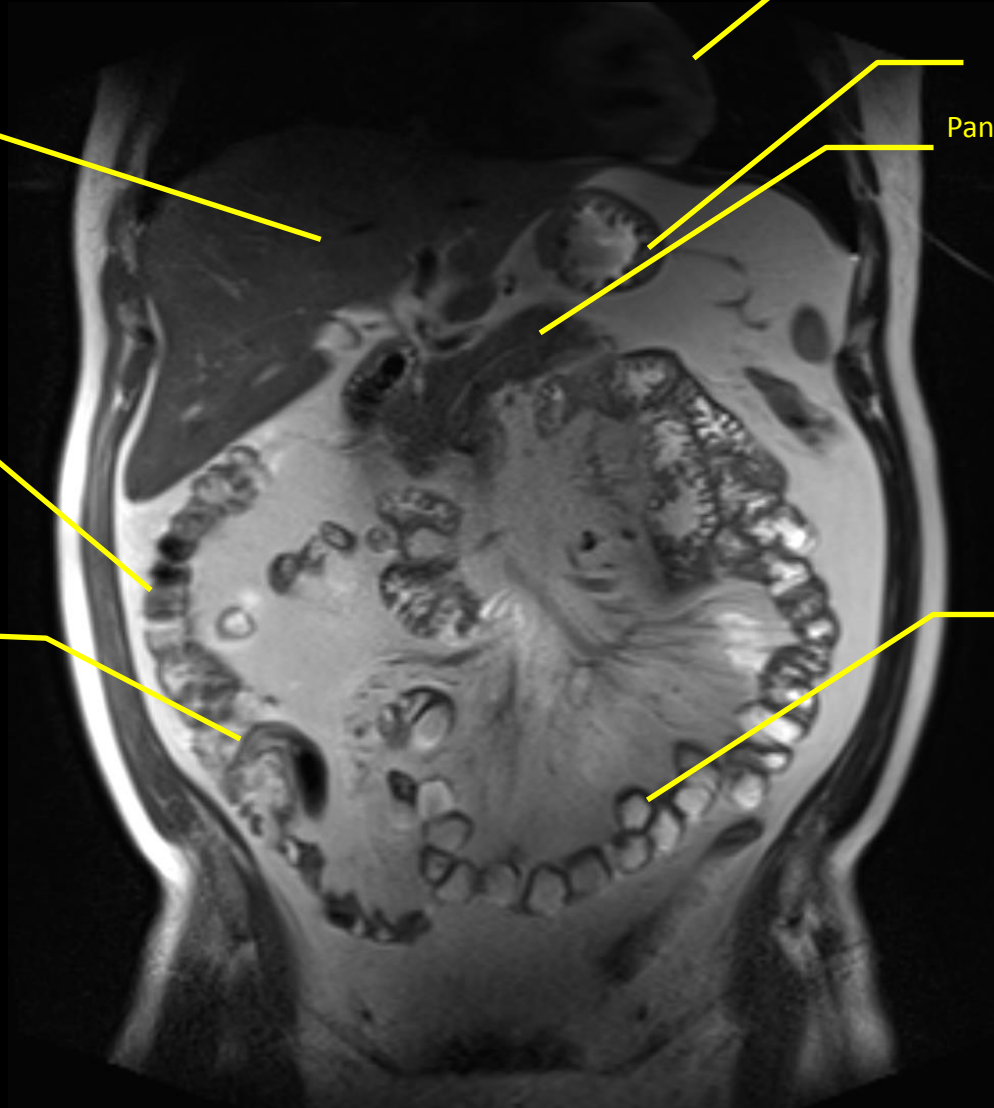
Magen

Pankreas, mit Ductus
Wirsungianus

Colon ascendens

Ileozoekalpol

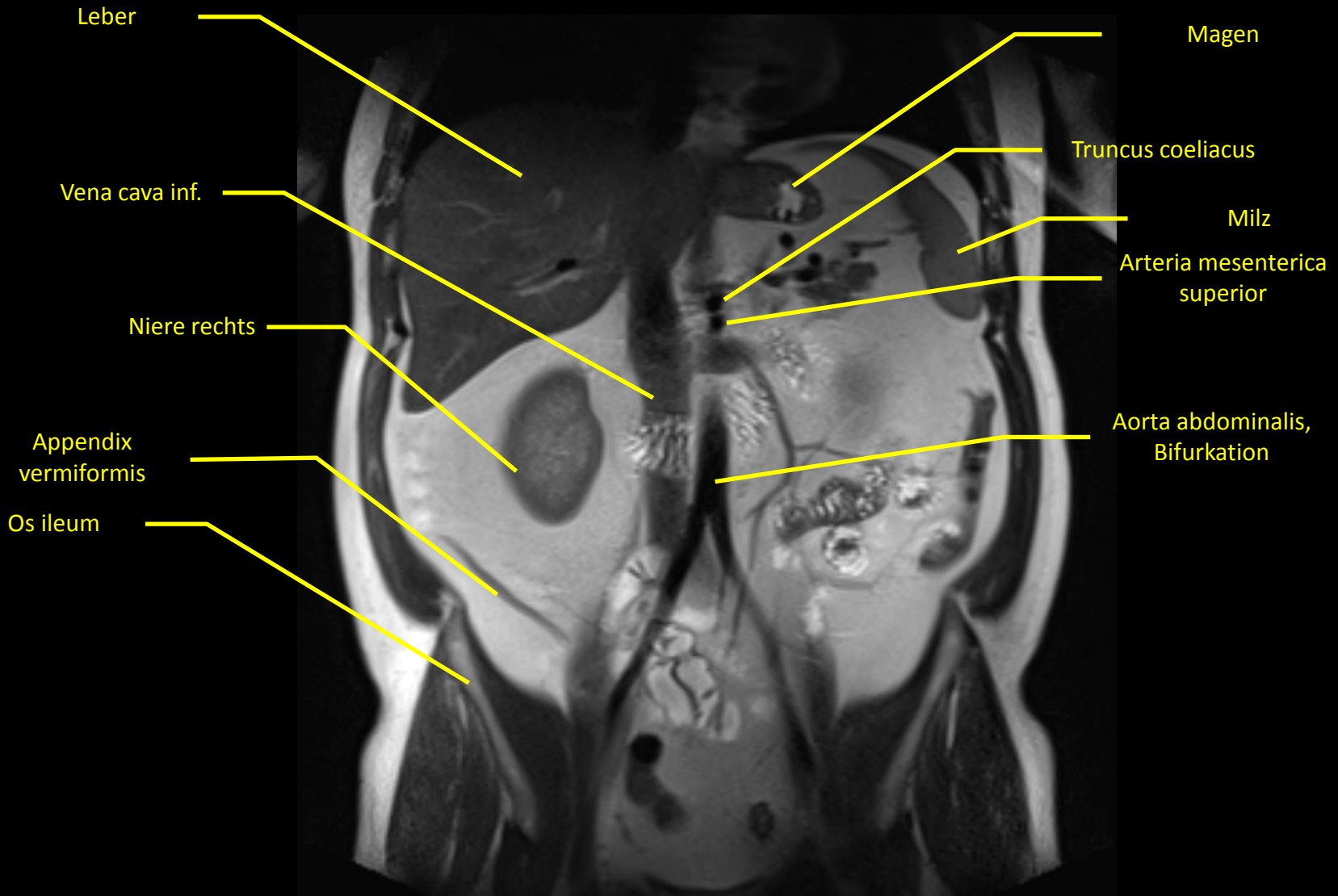
Ileum



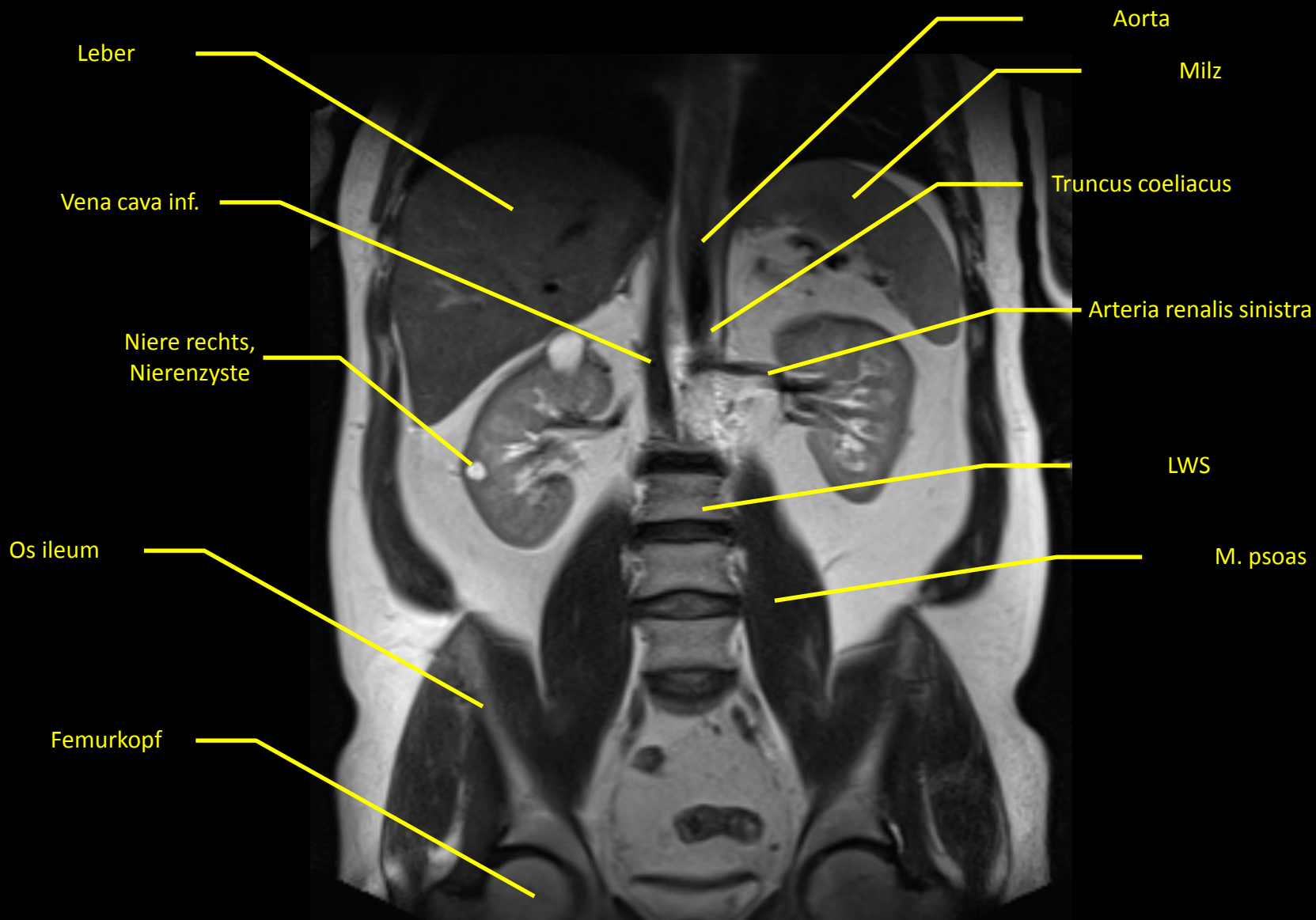
T2 - Coronal



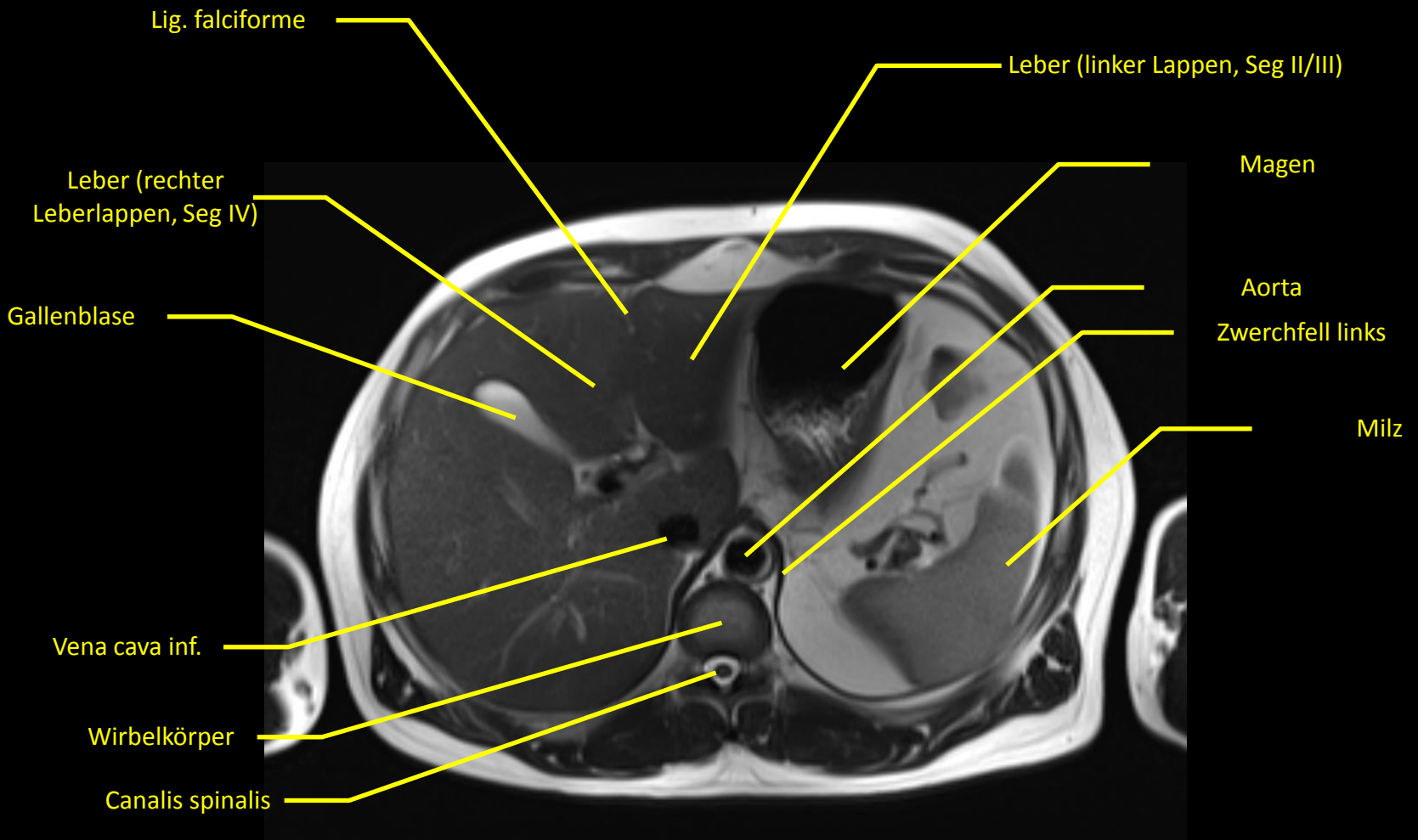
T2 - Coronal



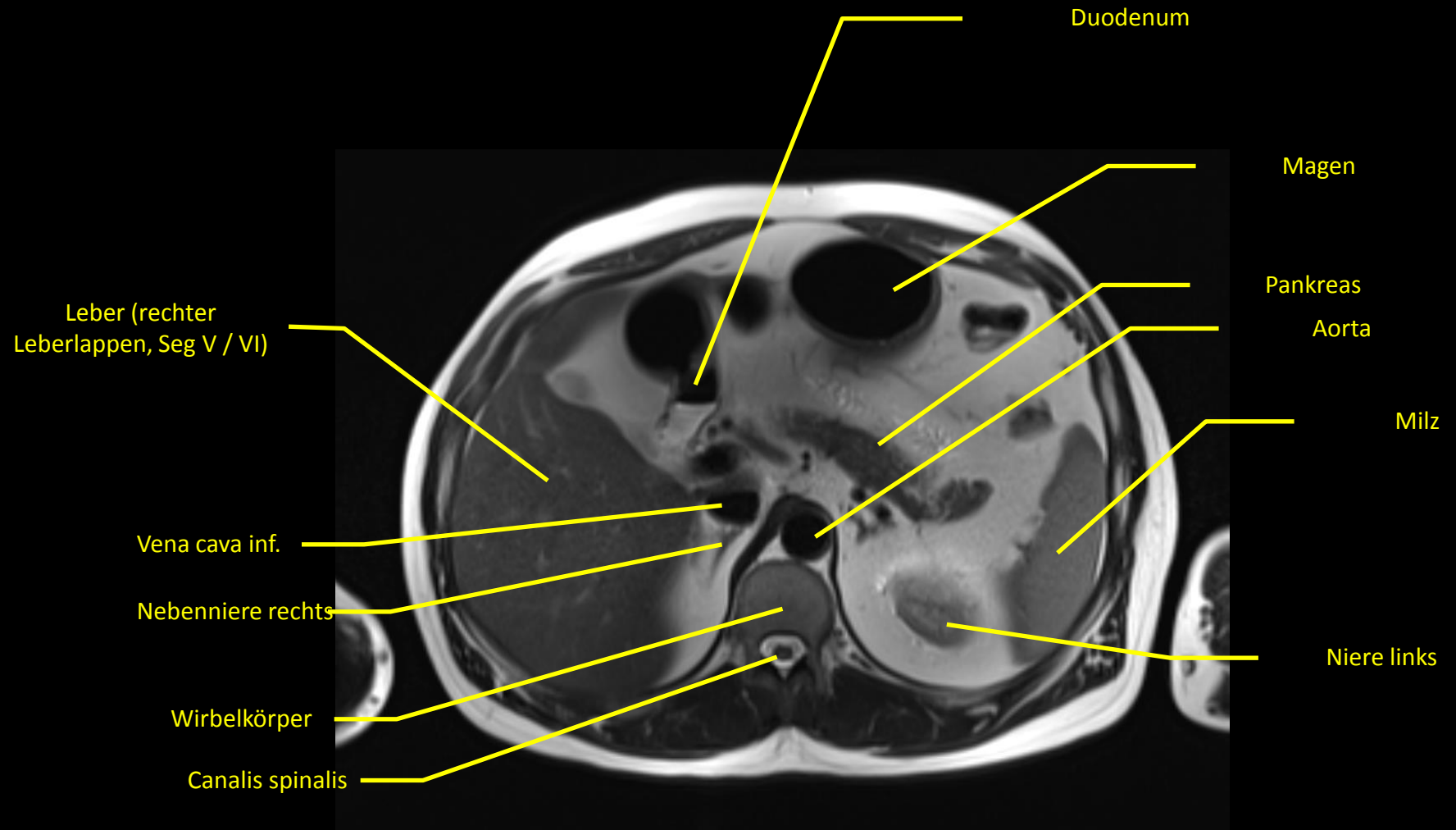
T2 - Coronal



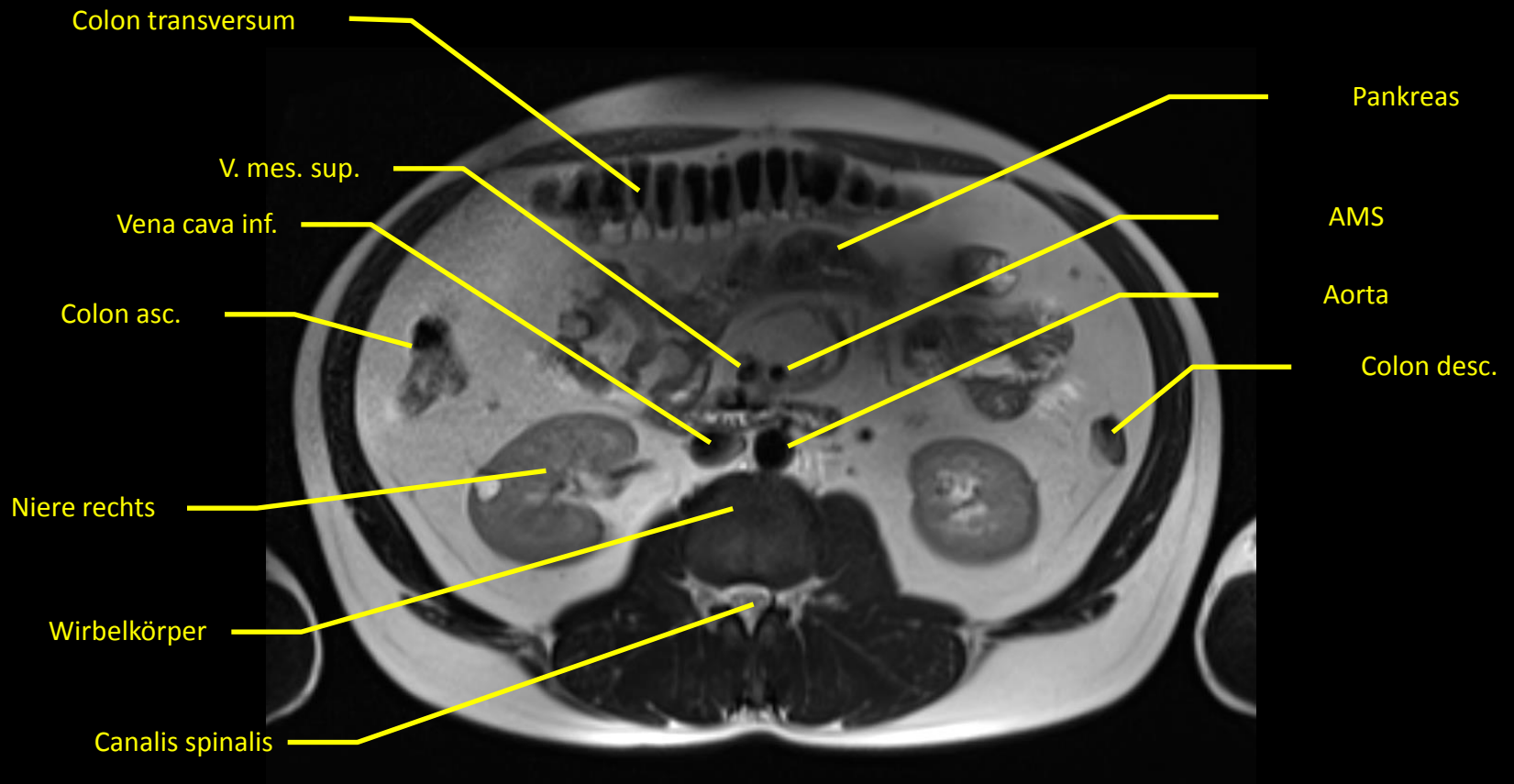
T2 - Coronal



T2 - Transversal



T2 - Transversal



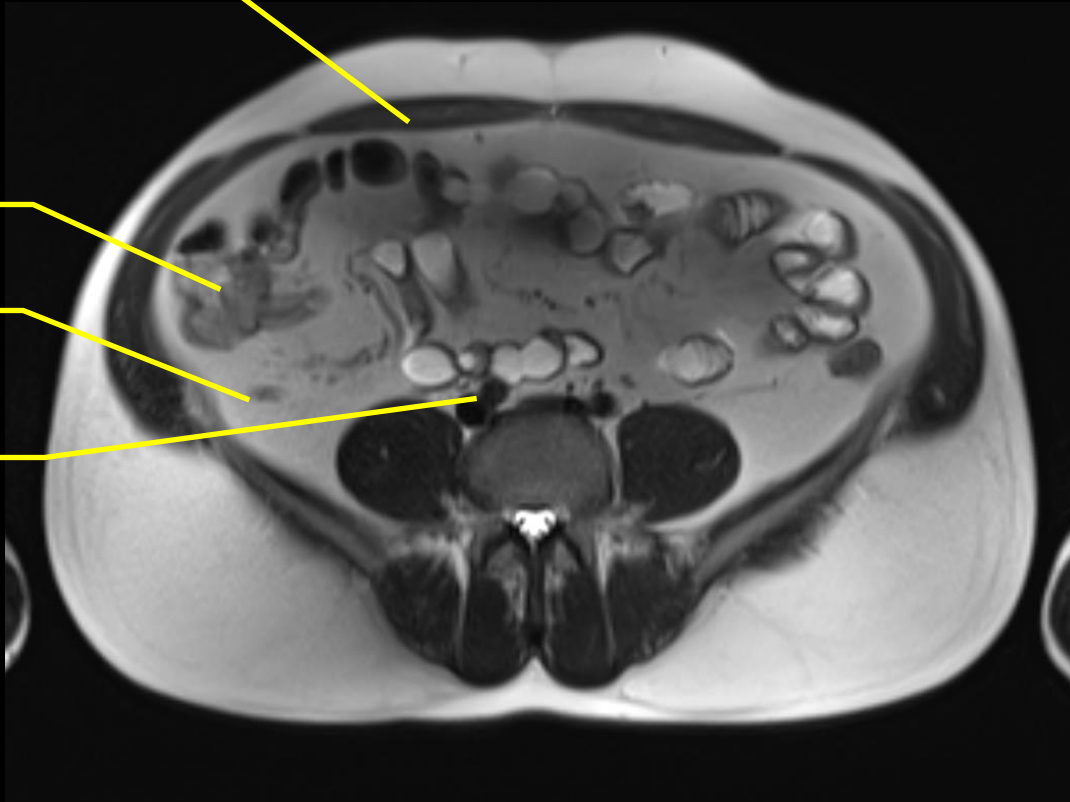
T2 - Transversal

M. Rectus abdominis

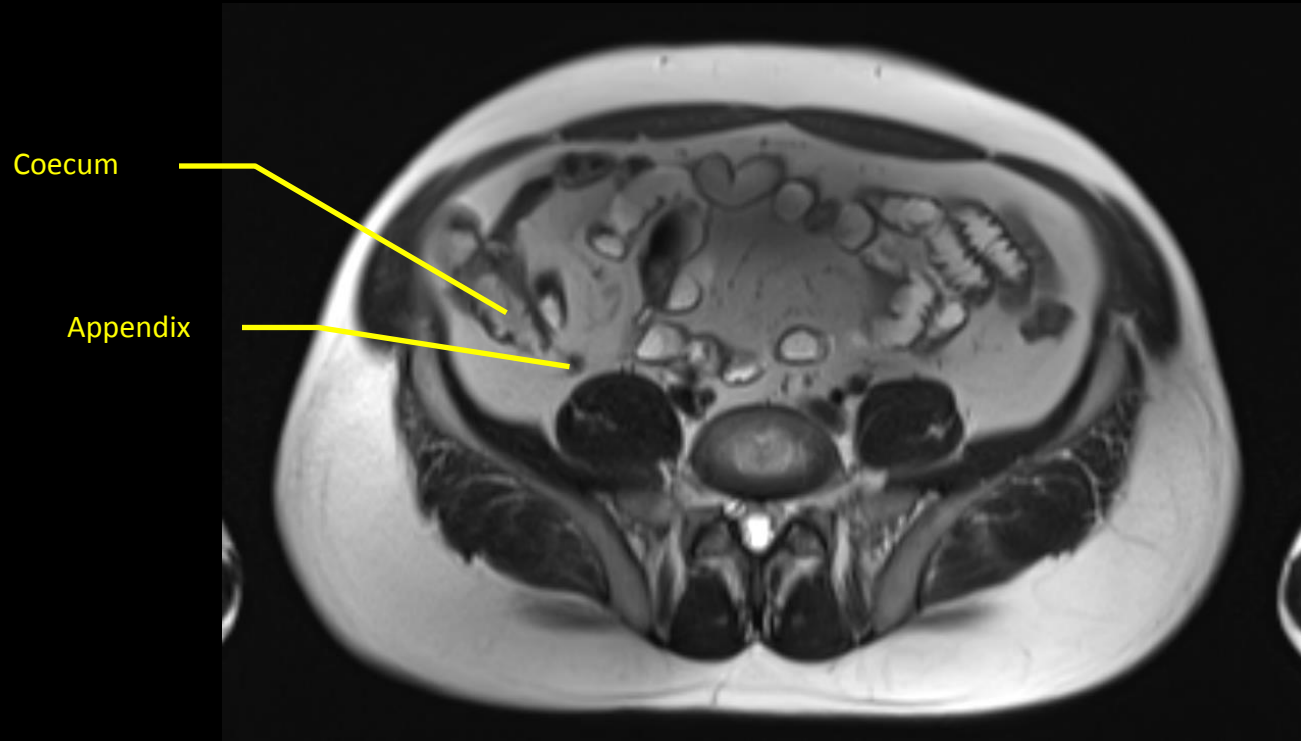
Colon asc.,
Zoekalpol

Appendix

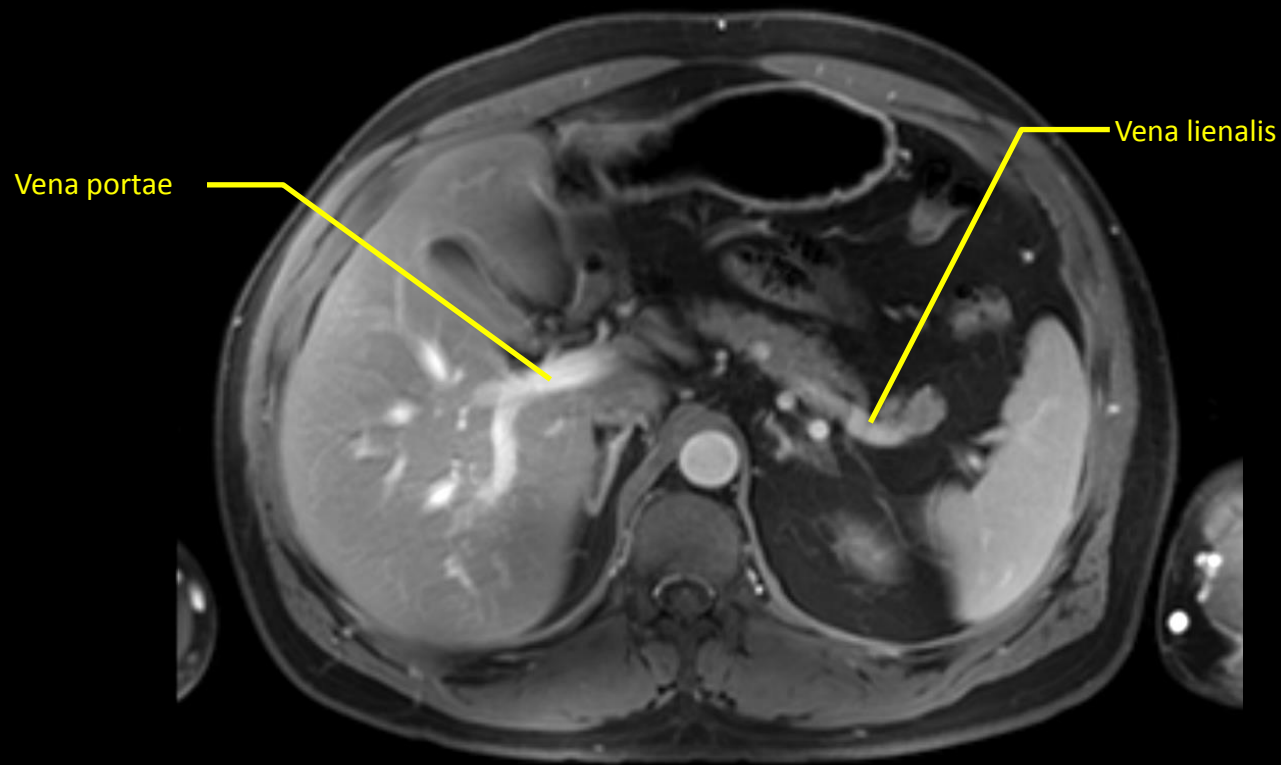
Arteria und Vena
iliaca comm. rechts



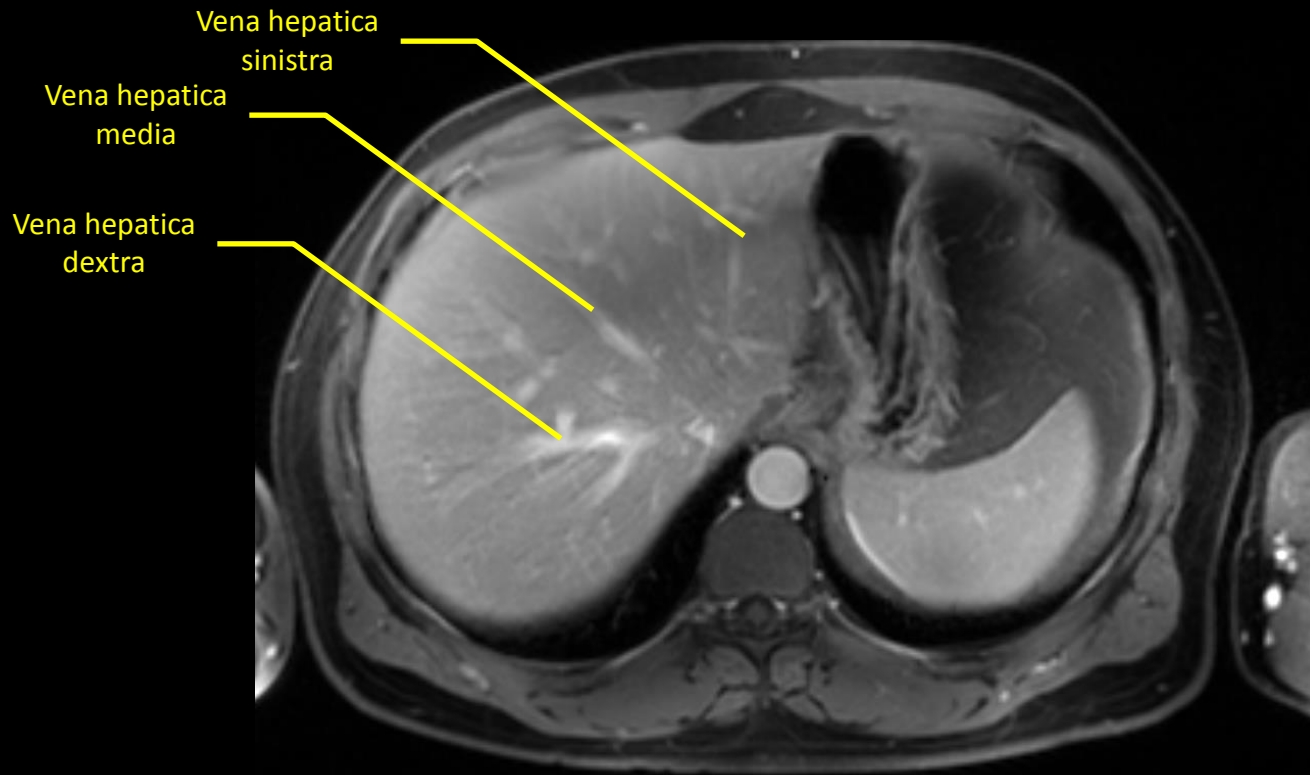
T2 - Transversal



T2 - Transversal



T1 mit Fett-Unterdrückung und Kontrastmittel
Transversal



T1 mit Fett-Unterdrückung und Kontrastmittel
Transversal