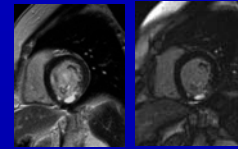




CMR



Imaging of acute and chronic ischemic heart disease:
 CINE, T2, Perfusion, Late Enhancement for follow up of intracoronary stem-cell therapy

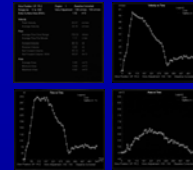


Radiology:
 ND Abolmaali, TJ Vogl
 Cardiology:
 M Britten, V Schächinger,
 AM Zeiher

CMR



Magnetic resonance flow measurements of the pulmonary artery
 normal values, cystic fibrosis, emphysema, cardiac insufficiency, shunts causing pulmonary hypertension

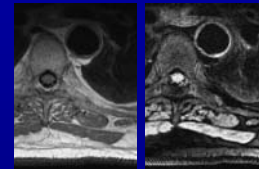


Radiology:
 ND Abolmaali, TJ Vogl
 Pediatric Cardiology:
 U Seitz, R Hofstetter
 Pulmonology:
 C v Mallinckrodt, TOF Wagner

CMR



Detection-Quantification-Characterization of plaque, imaging the vessel wall of the descending thoracic aorta: clinical implications, inflammatory processes, follow up under „statin-“therapy

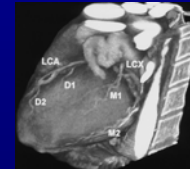


Radiology:
 ND Abolmaali, TJ Vogl
 Cardiology:
 M Britten, V Schächinger,
 AM Zeiher

CCT



Cardiac Computed Tomography:
 multi-slice based cardiac and coronary diagnostic
 calcium scoring, coronary angiography including soft plaque quantification

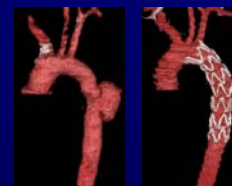


Radiology:
 C Herzog, TJ Vogl
 Cardiology:
 M Britten, V Schächinger,
 AM Zeiher

VDT



Vascular Diagnostic and Therapy,
 e.g. aortic stents and fenestrations, TIPS, chemoembolizations, peripheral interventions including brachytherapy, carotid stenting



Radiology:
 JO Balzer, A Thalhammer,
 TJ Vogl
 Thoracic Surgery:
 M Doss, A Moritz

FISI 2002

„3. Frankfurter Interdisciplinary Symposium for Innovative Diagnostic und Therapy“

Onko-Imaging and Intervention

27. - 28. 09. 2002



<http://www.fisi2002.de>